



CONTACT US

417.744.2717
800.310.2717



118 SW Hwy 60
PO Box 40
Billings, MO 65610

bmicompanyinc.com



BMI

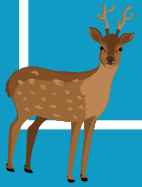
Auto Safety Tips

FALL



"You're 3.5 times more likely to hit an animal – especially a deer – in November than at any other time of the year."

– Insurance Institute for Highway Safety



BACK-TO-SCHOOL SAFETY

- ▶ Respect crossing guards.
- ▶ Share the road: with school buses, pedestrians, and bikers.
- ▶ Know the school-bus laws: Stop when they stop to collect or drop off children no matter where you are on the road. Opposing traffic must also stop.



FALL CAR CARE

- ▶ Replace your wiper blades. Autumn driving hazards include rain and falling leaves that may obscure vision.
- ▶ Clean and replace any dimmed or burnt out lights.
- ▶ Test your defrost and heater to make sure they are in working order.
- ▶ Check and top off your coolant levels. This is best to do during the cold months.
- ▶ Check all fluid levels. While you're there, make sure everything else is topped off.
- ▶ Have your battery checked before the cold months arrive.



FALL DRIVING TIPS

Follow these seasonal tips to avoid accidents, this fall.

- ▶ Be cautious when braking on leaves. If they are wet from rain or dew, they become very slippery.
- ▶ Adjust your drive time according to daylight savings. Avoid driving in the dark, as more fatal accidents occur then.
- ▶ Use sunglasses in the morning and evening to avoid sun glare, which is most common in autumn.